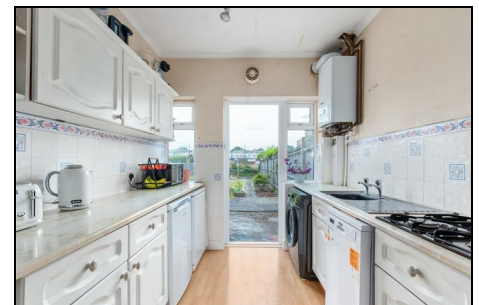


## Greenway Raynes Park, SW20 9BQ

£725,000 Freehold



This lovely **THREE DOUBLE BEDROOM** 1930's Blay House has a superb Facing Garden, off street parking for two cars and superb potential to extend to the loft and rear s.t.p.p. Located on a desirable tree lined residential road within easy access to Raynes Park High Street and Station. There is also aluminium double glazing, two spacious reception rooms, a separate kitchen and a neutrally decorated W.C and bathroom. No Onward Chain.



Although these particulars are believed to be correct, their accuracy is not guaranteed and they do not form part of any contract.

**Celebrating 30 years of successful Sales and Lettings in Merton**

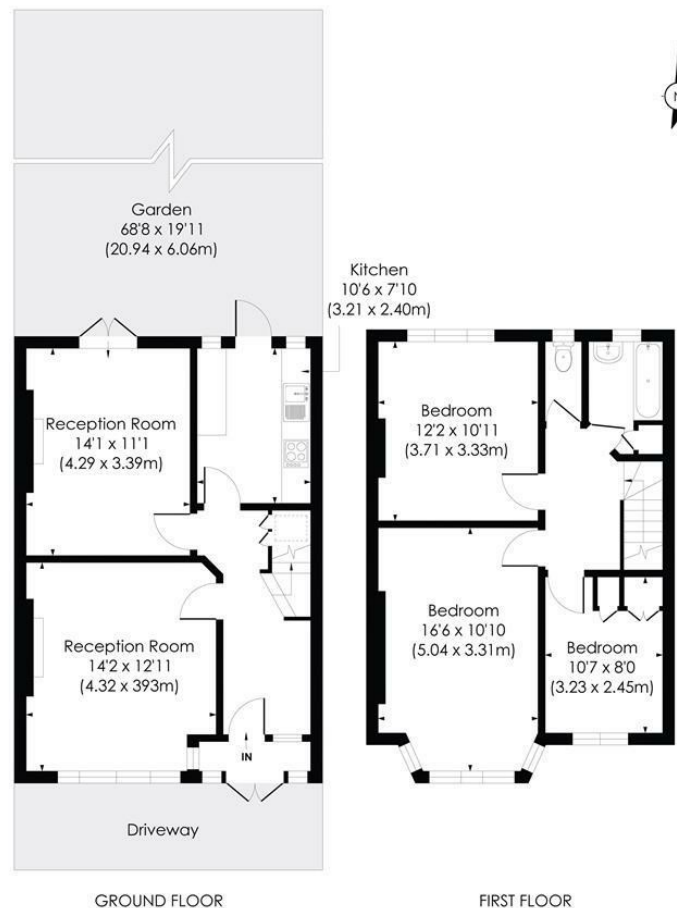


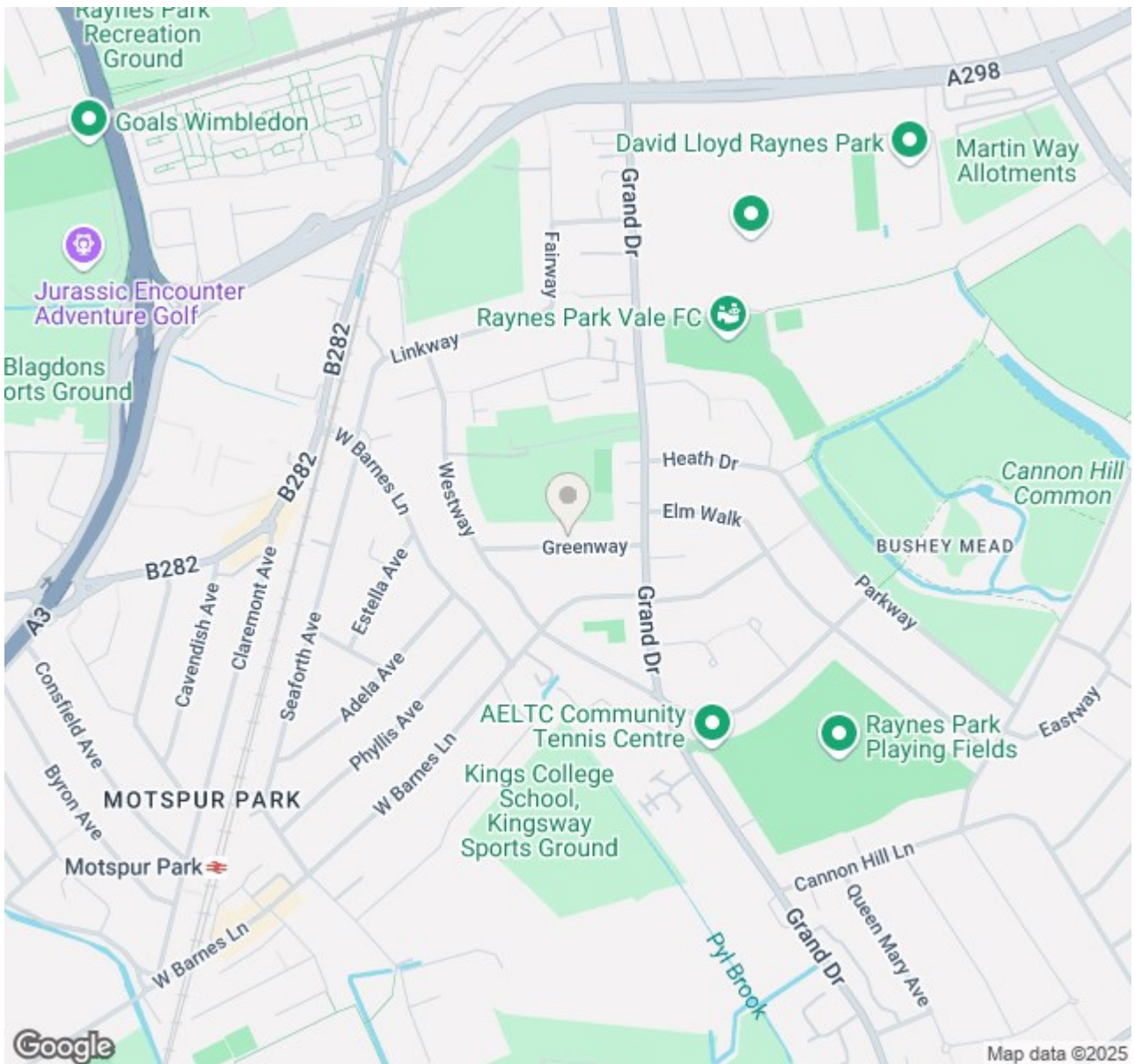


**GREENWAY, SW20**

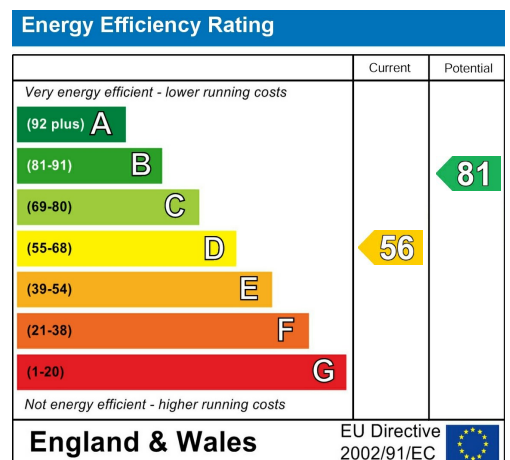
Approx. Gross Internal Floor Area

1090 Sq. ft/101.26 Sq. m





- Three Double Bedroom
- 1930's Mid Terrace "Blay" House
- Off Street Parking
- Potential To Extend S.T.P.P
- Easy Access to Raynes Park Station
- No Onward Chain
- Well Maintained Through Out
- Large Rear Garden
- EPC - D
- Council Tax Band - D



For Free Mortgage Quote and Best Mortgage Rates, call Ellisons Mortgage Advisor on 0208 944 9595



Although these particulars are believed to be correct, their accuracy is not guaranteed and they do not form part of any contract.

Celebrating 30 years of successful Sales and Lettings in Merton

